



## REGIONAL SPECIALISED METEOROLOGICAL CENTRE -TROPICAL CYCLONES, NEW DELHI TROPICAL WEATHER OUTLOOK

**DEMS-RSMC TROPICAL CYCLONES NEW DELHI DATED 25.08.2025**

**TROPICAL WEATHER OUTLOOK FOR THE NORTH INDIAN OCEAN (THE BAY OF BENGAL AND THE ARABIAN SEA) VALID FOR THE NEXT 168 HOURS ISSUED AT 0600 UTC OF 25.08.2025 BASED ON 0300 UTC OF 25.08.2025.**

### **BAY OF BENGAL:**

Yesterday's Low pressure area over northeast Madhya Pradesh & neighbourhood moved west-northwestwards and became less marked over central parts of south Uttar Pradesh & adjoining north Madhya Pradesh at 0300 UTC of today, the 25<sup>th</sup> August, 2025

An upper air cyclonic circulation lay over northwest Bay of Bengal off Odisha-West Bengal coasts between 1.5 & 5.8 km above mean sea level tilting southwards with height at 0000 UTC and persisted over the same region at 0300 UTC of 25<sup>th</sup> August, 2025. Under its influence, a Low-pressure area is likely to form over the same region during next 48 hours.

As per INSAT 3D imagery at 0300 UTC, intense to very intense convection lay over northwest Bay of Bengal & neighbourhood persisted during past 06 hrs ( Minimum cloud top temperature (CTT) is minus 70-90 °C ).

Scattered to broken low and medium clouds with embedded intense to very intense convection lay over northwest, central & southeast Bay of Bengal and Andaman Sea. Scattered low and medium clouds with embedded moderate to intense convection lay over northeast & southwest Bay of Bengal.

### **\*PROBABILITY OF CYCLOGENESIS (FORMATION OF DEPRESSION) DURING NEXT 168 HRS:**

24 HOURS	24-48 HOURS	48-72 HOURS	72-96 HOURS	96-120 HOURS	120-144 HOURS	144-168 HOURS
NIL	NIL	NIL	NIL	NIL	NIL	NIL

**\*NOTE: EVERY 24HR FORECAST IS VALID UPTO 0300 UTC (0830 IST) OF NEXT DAY**

### **ARABIAN SEA:**

Scattered low and medium clouds with embedded isolated weak to moderate convection lay over Arabian Sea, Gulf of Kutch, Gulf of Cambay and Lakshadweep Island area.

### **\*PROBABILITY OF CYCLOGENESIS (FORMATION OF DEPRESSION) DURING NEXT 168 HRS:**

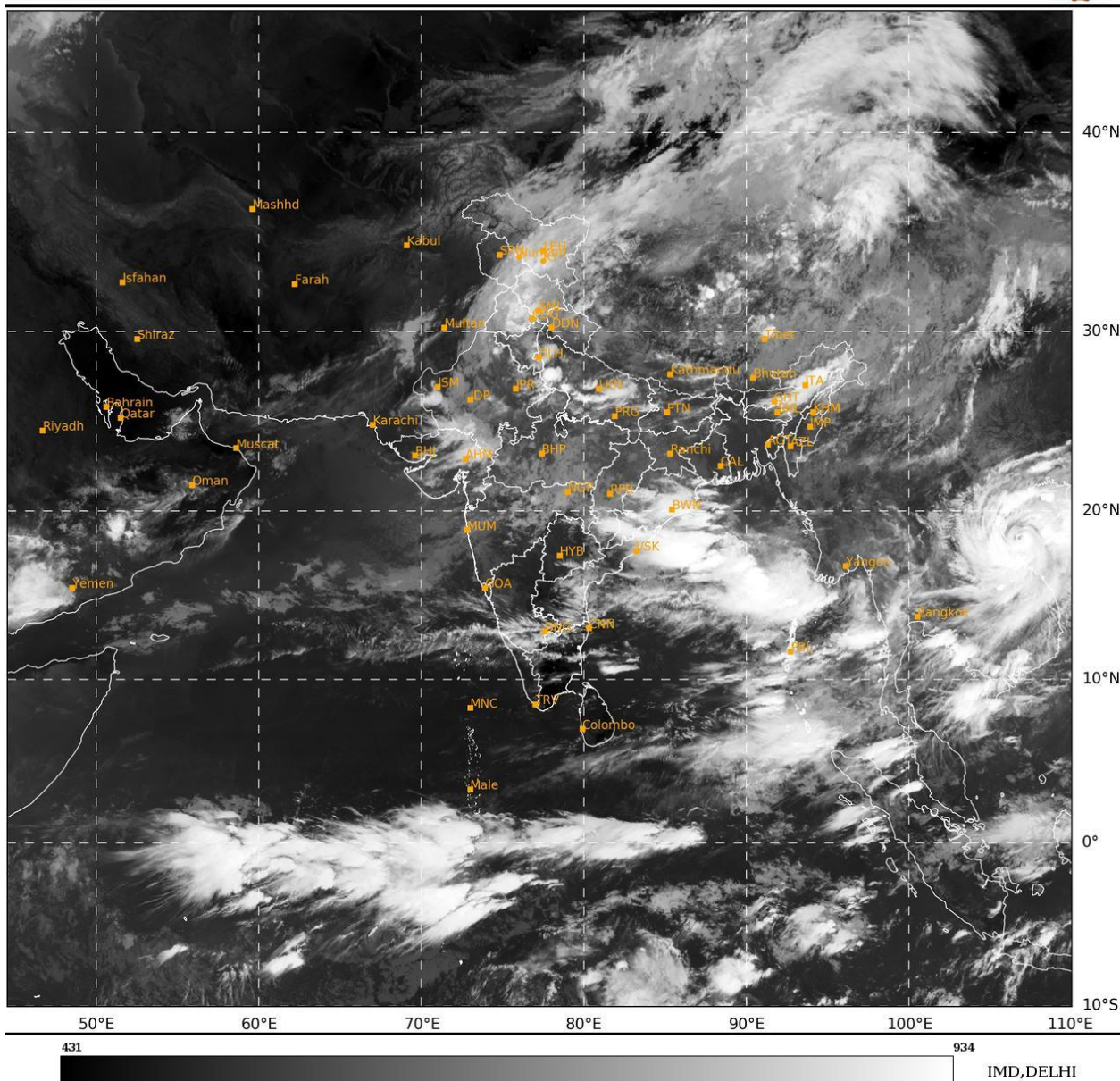
24 HOURS	24-48 HOURS	48-72 HOURS	72-96 HOURS	96-120 HOURS	120-144 HOURS	144-168 HOURS
NIL	NIL	NIL	NIL	NIL	NIL	NIL

**\*NOTE: EVERY 24HR FORECAST IS VALID UPTO 0300 UTC (0830 IST) OF NEXT DAY**

**REMARKS: NIL**

SAT : INSAT-3DR IMG  
 IMG\_TIR1 10.8 um  
 L1C Mercator

25-08-2025/(0315 to 0342) GMT  
 25-08-2025/(0845 to 0912) IST



Cloud distribution: (a) Isolated: <25%, Scattered:25-50%, Broken: 51-75%, Solid:>75%, Convection Intensity: (a) Weak: Cloud Top Temperature(CTT)>-25°C,(b)Moderate:CTT:-25°Cto-40°C,(c)Intense:CTT: -41°Cto -70°Cand(d)Very Intense::Less than -70°C  
 PROBABILITYOFCYCLOGENESIS(FORMATIONOFDEPRESSION):NIL:0%,LOW:1-33%,MODERATE:34-66%ANDHIGH:67-100%  
 ThisisaguidanceBulletinforWMO/ESCAPPanelMembercountries.VisitrespectiveNationalwebsitesforCountryspecificBulletins